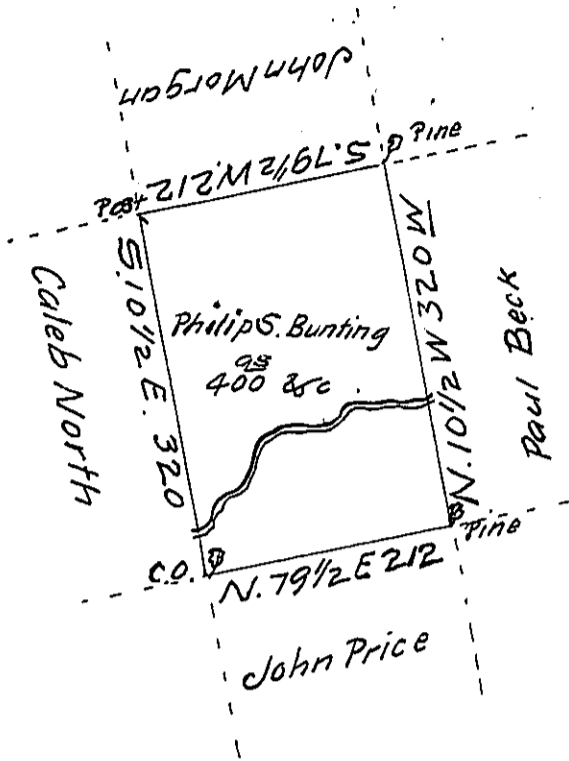


Hazle
Luzerne



A Draft of a tract of Land called _____ situate on the waters of
 Catawissey Creek in the County of Northumd or Northamp^{ts} contain-
 ing Four hundred acres & allow^e. Surveyed for Philip S. Bunting
 the 18th day of October 1793 by virtue of a warrant dated
 the 10th day of July 1793

To Daniel Brodhead Esq^r. by W^m Gray D.S.
 Surv^r Gen^l

IN TESTIMONY that the above is a copy of the original remaining on file in
 the Department of Internal Affairs of Pennsylvania, made
 conformably to an Act of Assembly approved the 16th day of
 February, 1833, I have hereunto set my Hand and caused
 the Seal of said Department to be affixed at Harrisburg,
 this tenth day of July 1911

Nancy Powell
 Secretary of Internal Affairs.